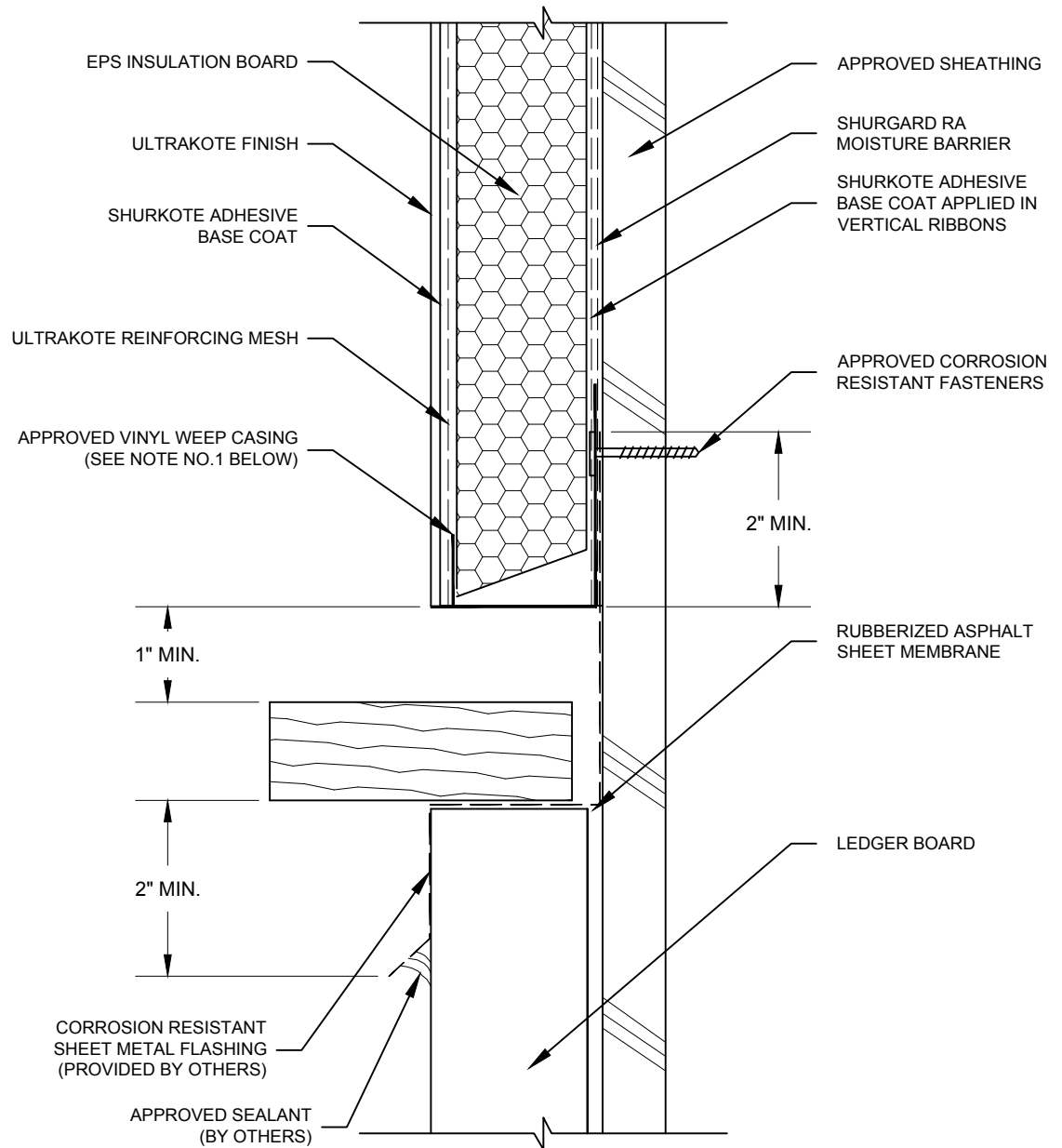


# TYPICAL TERMINATION AT TOP OF BALCONY



**NOTE:**

1. MAINTAIN  $\frac{1}{8}$ " SPACE BETWEEN BEVELED INSULATION AND WEEP CASING BEAD.
2. ALL LAPS,, SPACES AND CORNERS IN METAL FLASHING SHALL BE MADE PERMANENTLY WATER TIGHT.